

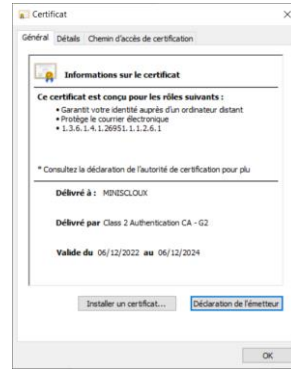
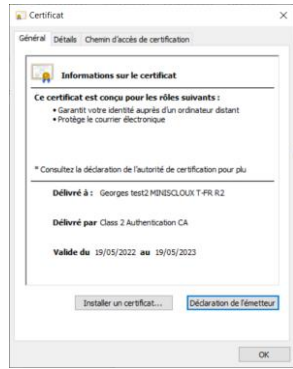
Renault Group



Renault net token authority change to G2

FAQ

V1.2 JUNE 2023
DIR-SD



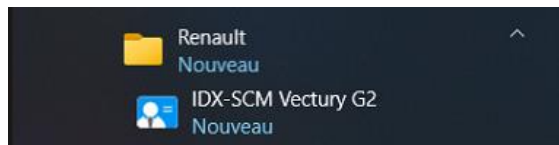
07

FAQ



FAQ

- **When to migrate user certificates to G2 ?**
 - As soon as possible from 17/04/2023
- **What about technical certificates ?**
 - Applications using a Renault net technical certificate (e.g. TDFA, RPH, DWN, DDA, etc.) must follow a specific procedure
 - This procedure will be released in 2023
- **How do I recognize that the user workstation is migrated with the RNFI V23 master?**
 - In the start menu > Renault, the IDX-SCM application is named IDX-SCM Vectury G2 with **the blue icon**



FAQ

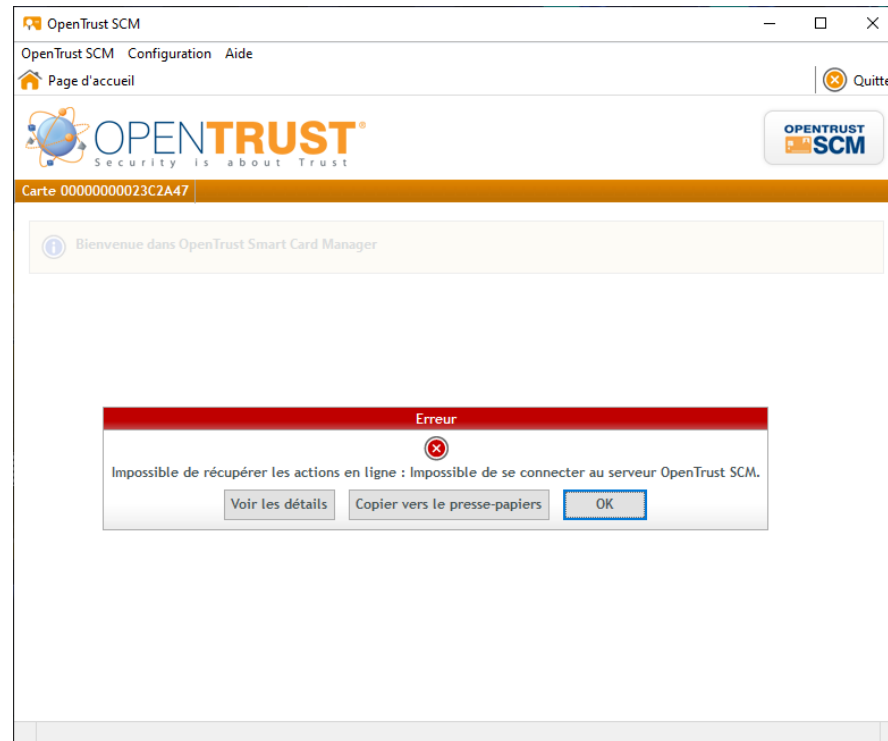
- **Is it possible to update only one workstation to RNFI Masterkit V23 and on this workstation to makes the migration for all e-token ?**
 - Yes – but when the end user will get an issue on its token, if RNFI Master Kit is not V23. The end user will be bloqued to manage its token on its workstation.
 - **We don't recommend this practice.**

- **Does the migrated e-token (with G2 certificate) work on a workstation which does not have the latest Masterkit V23 installed?**
 - **Yes** – only for access to business apps and website
 - **No** – for unlock token, renew certificates, change PIN Code.

- **Will my Workstation be updated automatically to have the RNFI MasterKit v23?**
 - If Workstation have RNFI_Updater activated => End User will be notified to update its RNFI MasterKit
 - For this, if the windows account is Administrator he can click on the proposed update.
 - If not , the end-user will need local Administrator to process the update.

FAQ

- **IDX-SCM displays the error message below, what is the problem?**



- This error will be displayed if you use the old RNFI MasterKit from 01/09/2023:
You can no longer manage your certificate with the old version of IDX-SCM.
- **Solution:** Install the latest RNFI V23 MasterKit to renew your certificate or unlock your token.

FAQ

- **Do we have to recycle the User Token before enrolling it with the new G2 certificate?**
 - **No** – just change the password in the Subtool and enroll with the new app «IDX-SCM Vectury G2»
 - For information, the user's G1 certificate will be purged the same evening in the Renault net directory



RG

Thanks